



## quickDAQ FAQ

*quickDAQ provides data collection and analysis without programming.*

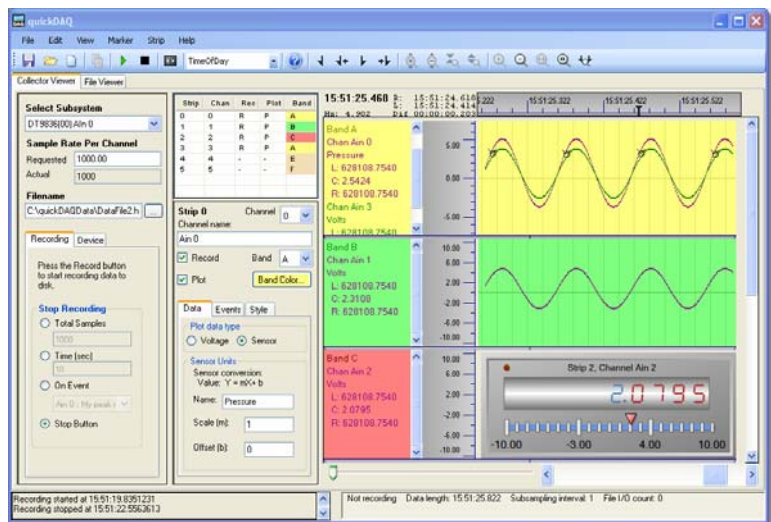
### What is quickDAQ?

quickDAQ is a ready-to-measure data collection and analysis software utility that allows you to acquire analog data, plot it during acquisition, analyze it, and save it to disk for later analysis. No coding is necessary. Just load and start measuring, right out-of-the-box.

### What are the main features of quickDAQ?

quickDAQ provides a variety of functions to meet your application needs:

- Acquire analog data from most Data Translation USB and PCI data acquisition devices.
- Plot data as it is being acquired for real-time visual analysis.
- Analyze data or save it to disk for later analysis.
- Import data into other applications for advanced analysis.



*Figure 1. quickDAQ is a data collection and analysis software utility that can be used right out of the box ... without writing code. The Chart Viewer shows the channels that have been selected for display. Several channels can be displayed on a single bar for comparison.*

### What boards are supported?

The quickDAQ application works with **all Data Translation USB and PCI data acquisition hardware.**

### What applications are supported?

A variety of data acquisition applications from temperature measurement to high speed testing and analysis are supported with this one package. Additionally, you can import data into other applications like DT Measure Foundry and MATLAB from the MathWorks for advanced analysis.

## How is it structured?

quickDAQ was designed with user simplicity in mind. With two main modes to choose from, the Collector Viewer and the File Viewer, the user can easily switch between the functions needed.

- **Collector Viewer:** This view handles real-time acquired data from a hardware module. View data in various modes such as individual strip charts per channel, overlapping charts, and custom gauges. In this view, you can choose to record data to a file and specify channels, recording triggers, start and stop criteria and more.
- **File Viewer:** This view provides post-processing of your recorded data from previous quickDAQ sessions. No need for the hardware to be installed in this mode. A standard Windows file browser allows you to locate the data file you want to view and loads it. You can then view and analyze the data using the same functions provided in the Collector Viewer.

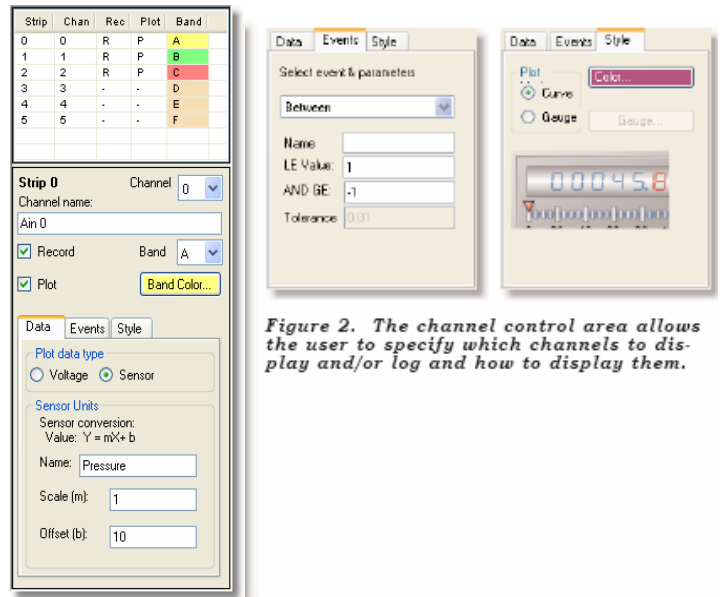


Figure 2. The channel control area allows the user to specify which channels to display and/or log and how to display them.



Figure 3 Easily select any gauge type to fit your application need. Simply drag and drop your choice into the viewer.

## Availability?

SP8051-CD quickDAQ ships on CD or is available as a download on the web site for \$195.